



THE GREAT GAME^x

DIGITAL TREASURE HUNT^x

Welcome to The Great Game Digital Treasure Hunt...

This treasure hunt will lead you around the digital world to some amazing wonders and interesting sights.

Each clue will link with the next and lead you to discover somewhere completely new until finally you will reveal instructions on how to access the treasure. The treasure is a hidden web-page.

Requirements

- Access to the internet.
- Access to Google Earth. **IMPORTANT NOTE** - you must use Google Earth and *not* Google Maps, this can be downloaded as an app or launched from an internet browser.

Instructions

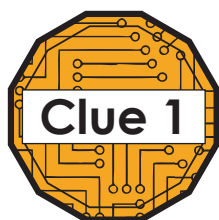
1. Enter into Google Earth.
2. Write the answers in as you go - only the correct answer will fit in the spaces provided.
3. Use of the internet to help you is permitted.
4. Hints can be found on the last page at the top - use this for a nudge in the right direction.
5. Answers are on the last page at the bottom.

Remember if you are stuck try re-reading the question carefully before checking the hints & answers.

Contents

Clue 1.....	2	Clue 5.....	7
Clue 2.....	3	Clue 6.....	8
Clue 3.....	4	Clue 7.....	9
Clue 4.....	5	Hints & Answers.....	10
Clue 5.....	6	Printer Friendly Version	

...Good luck!



1. Find the country that fits the following criteria (Tip - read each criteria carefully).

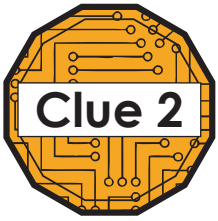
- It is on the continent that sits between the worlds 2 largest oceans.
- It is close to the only pole with a land mass.
- It has a long land border on its western side.
- It has a sea border on this eastern side.
- It has a mountain range running down its western border.
- It shares land borders with 5 other countries.

Only the correct answer will fit in the spaces, once you have this move on to the next clue.

Did you know? (DO NOT READ BEFORE ANSWERING THE CLUE)

This was the first country to use fingerprints for identification

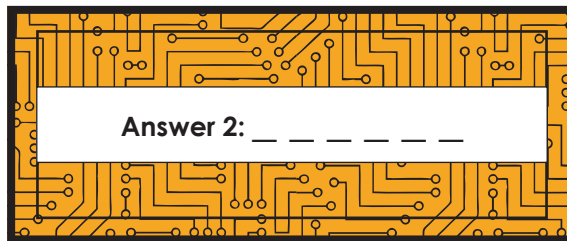
In 1892, the small town of Necochea, was rocked by the gruesome stabbing of two children. With no witnesses to the crime, local police were unable to tie the murder to any particular suspect. Utilizing a bloody fingerprint left on a door handle, a local detective discovered the murderer to be the kids' mother (who not long after, eventually confessed to the crime.)



1.
 - Locate this country's capital.
 - Zoom in so you are 100 km from the earth's surface. You can see your distance in the bottom right corner as shown in the box here:



- From here move west until you reach the **first** regional line (thin dotted white line) running south to north past a town beginning with C.
 - *If you need to re-align the map to north then just click once on the compass and it will re-adjust.*
 - The same line turns eastwards at a right angle close to a town beginning with M.
2.
 - From this right angle continue scrolling northwards until you reach a town whose name includes the same surname of a famous American actress (if you reach the next motorway you've gone too far).
Hint - this actress won a Golden Globe for starring in 'There's Something About Mary'.
 3.
 - Zoom in to 10 km (10,000m).
 - Scan directly westwards until you spot a large object depicted in the natural environment (if you reach the town of Washington you've gone too far).
 - Write this in the answer.



Only the correct answer will fit in the spaces, once you have this move on to the next clue.

Did you know? (DO NOT READ BEFORE ANSWERING THE CLUE)

Why this is here..

A farmer created this as a stunning tribute to his late wife by planting 7,000 trees. His wife first suggested the idea after flying over land and noticing that a farm looked a bit like a milking pail. However the farmer was too busy at the time with work to take her plans seriously but after she died in 1977 while carrying their fifth child he and their four children planted every tree individually starting in 1979, it is known as the Nazca Guitar.

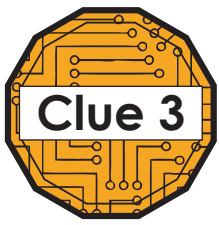
Somebody Once Played for Four-and-a-Half-Days

In 2011, Irish guitarist Dave Browne set a new world record for the longest guitar session ever. The talented guitarist played non-stop for 114 hours, 6 minutes and 30 seconds, between 12 and 17 June.

The mega session took place in the famous Temple Bar Pub in Dublin, Ireland (which remained open for the duration of the gig) and Dave had breaks of no more than 30 seconds between songs. On a guitar lent to him by Stevie Ray Vaughan, Dave played a total of 1,372 songs, finishing with the U2 classic, 'With or Without You'.

The First was Created in Ancient Egypt 3,500 Years Ago

It belonged to a singer of the time known as Har-Mose and was made from polished cedar with a rawhide soundboard, featured three strings, and even had a plectrum device attached to the instrument via a chord. This intriguing guitar heirloom is on display in the Archaeological Museum in Cairo.



1. What word links the object from clue 2 to an insect? Put this word in the space below by **A** (only the correct word will fit in the gaps).

Hint - think about who uses the object in clue 2, music artists, bands etc...

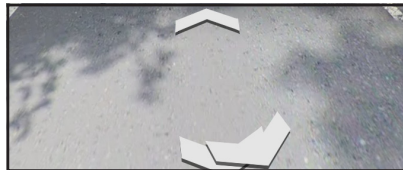
2. Which links word **A** to a religious building, another name for a street and an African animal.

Write the religious building in space by **B** and the street by **C**.

A. _ _ _ _ _ **B.** _ _ _ _ _ **C.** _ _ _ _ _

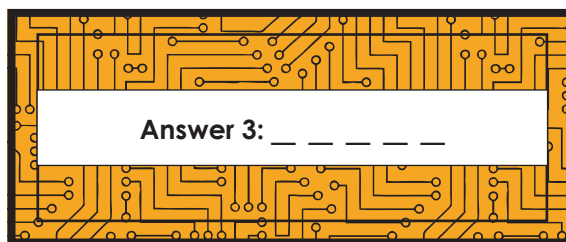
3.

- Type this in the search bar and go here - *it must be typed in exactly as written above to take you to the correct spot* (to access the search bar click on the magnifying glass icon).
- Click onto street view mode (the little man icon in the bottom right corner).
- The area will now become highlighted in blue, double click on this to access street view (or drag and drop the man on it if you are on PC).
- Make sure you are in street view by clicking on the blue highlighted road and not a photo (the small blue circles) - you can check this by making sure there are arrows in the middle of the screen as shown below:



- If you don't see these arrows then you are in a photo and need to exit this mode and try again to get into street view by double clicking on the blue highlighted road or dragging and dropping the man icon on it.
- Find the answer to the following question and write it in the answer.
- Who's 50th birthday is it? Use the arrows to help you look around.

Hint - the writings on the wall.



Only the correct answer will fit in the spaces, once you have this move on to the next clue.

Did you know? (DO NOT READ BEFORE ANSWERING THE CLUE)

The Title and Cover Happened Because They Were Lazy

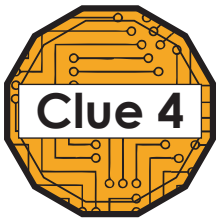
The album's working title was 'Everest,' an inside joke about the brand of cigarettes smoked by engineer Geoff Emerick. They had intended to shoot the cover photo at Mount Everest, but none of them wanted to make the long journey. Instead, McCartney suggested naming it after the street on which EMI Studios was located. That meant they could photograph themselves in the nearest crosswalk, which took about 30 minutes total. They are walking away from the studio which is the white building with the writing on the wall in front.

The Only Cover Without a Name or Title

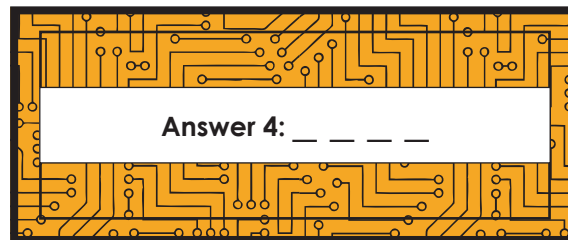
For the only time in their career, The Beatles presented the world with an album cover that didn't feature their name, or the title of the LP at all. Designer John Kosh claimed that EMI bosses were furious, but argued: "The biggest band in the world, you don't have to say who they are - everyone knows who they are."

Only Six Photos Were Taken

Road traffic wasn't the same 50 years ago, but Abbey Road was still a busy thoroughfare, which meant that photographer Iain Macmillan only had a short time to get his shot on his Hasselblad camera. A policeman halted the traffic as Macmillan climbed up a stepladder in the middle of the road. The Fab Four crossed the road back and forth three times as Macmillan fired off a shot each time. Paul McCartney looked at the contact sheet and it was decided that frame five was the best, with all four musicians marching boldly across the road.



1.
 - Zoom out from the location in clue 3.
 - Keep zooming out until you can line up the map below to the view on your screen and stop.
 - Using this view and the map study the area and look for something unusual at the **X**. Write this in the answer.



Only the correct answer will fit in the spaces, once you have this move on to the next clue.

Did you know? (DO NOT READ BEFORE ANSWERING THE CLUE)

This is the Largest Hill Figure in UK.

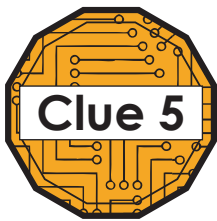
The giant 147m-long (483ft) landmark was created in 1933 to indicate the location of Whipsnade wildlife park. It is the largest hill figure in England.

WW2 Cover Up

During World War Two it was covered to prevent it from helping German pilots to navigate. Troops were brought in to help camouflage the landmark with brushwood, nets and manure.

It Took 18 Months to Finish

Work began in November 1931. By April 1932, a rough outline was visible, almost two acres of land had to be cleared to reveal the chalk. Thousands of man hours over 18 months were spent digging the creature out of the hillside with pick-axes, it was finished in spring 1933.



1. Go to the continent where this animal can be found.
2. Locate the highest mountain on this continent and scroll north west going past a small lake, then to a second larger lake and stop. *(If you need to re-align the map to north then just click once on the compass and it will re-adjust).*
3.
 - Move to the south western tip of this lake.
 - Continue moving south until you reach the southern tip of this region (indicated by the thin white dotted line).
4.
 - On the next page are 2 images of a specific location from this area.
 - Study this area in detail using the key features in the pictures to help you and figure out where the location is.
 - Following this find the animals which can be seen at the spot inside the white circle by zooming in.
 - Work out what is the name of these animals and write it in the answer.
Tip - you might need to use the internet to correct identify which animal it is.

Did you know? (DO NOT READ BEFORE ANSWERING THE CLUE)

Simba the Lion King

The name for lion in Swahili, an African language, is 'simba'.

Highest Pizza Delivery

In May 2016, Pizza Hut set an official Guinness World Record by delivering the highest altitude pizza to the top of the highest mountain in Africa.

The challenge began on May, 5th 2016 where a pizza was made in Pizza Hut's new Dar Es Salaam restaurant in Tanzania and then flown to Kilimanjaro. From here it was transported to the trailhead and then carried in a insulated, battery-heated pack, which was especially designed to keep the pizza horizontal and fresh.

The record culminated with the General Manager of Pizza Hut Africa Randal Blackford, a group of employees and a team of experienced guides celebrating on the summit of Kilimanjaro with a slice of pepperoni pizza on May, 8th 2016.

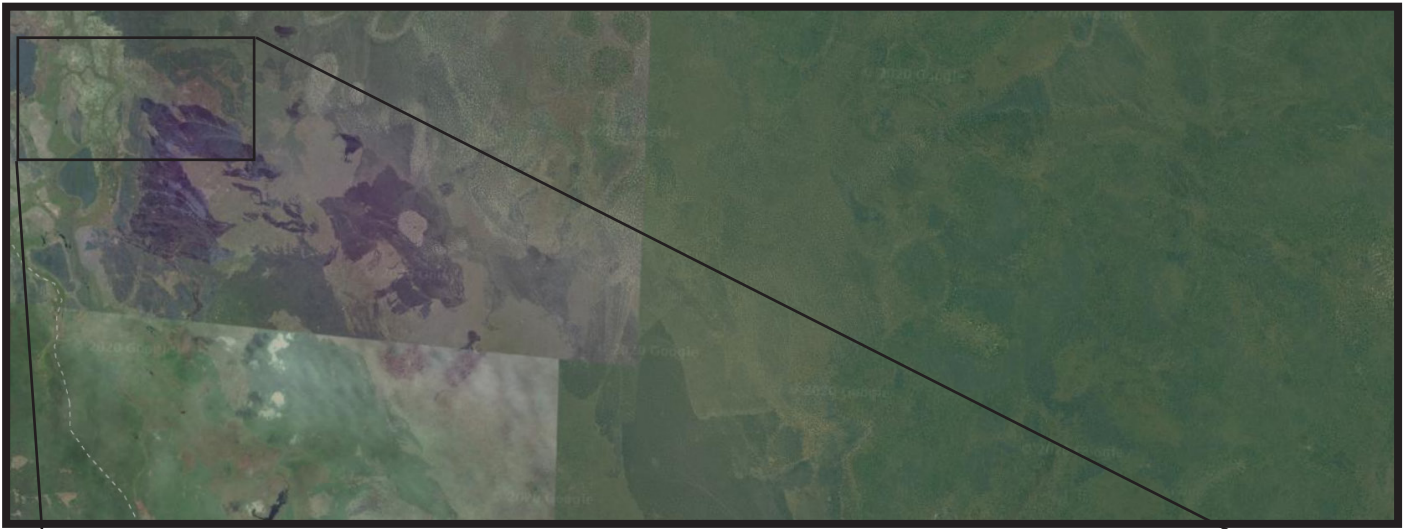
Highest Football Match

In June 2017 a group of 30 female footballers from 20 nations played the highest game of soccer on record. The game was played in Kilimanjaro's volcanic pit and lasted a full 90 minutes.

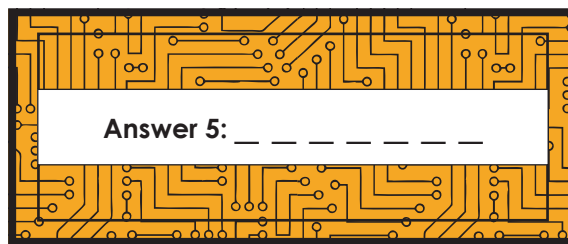
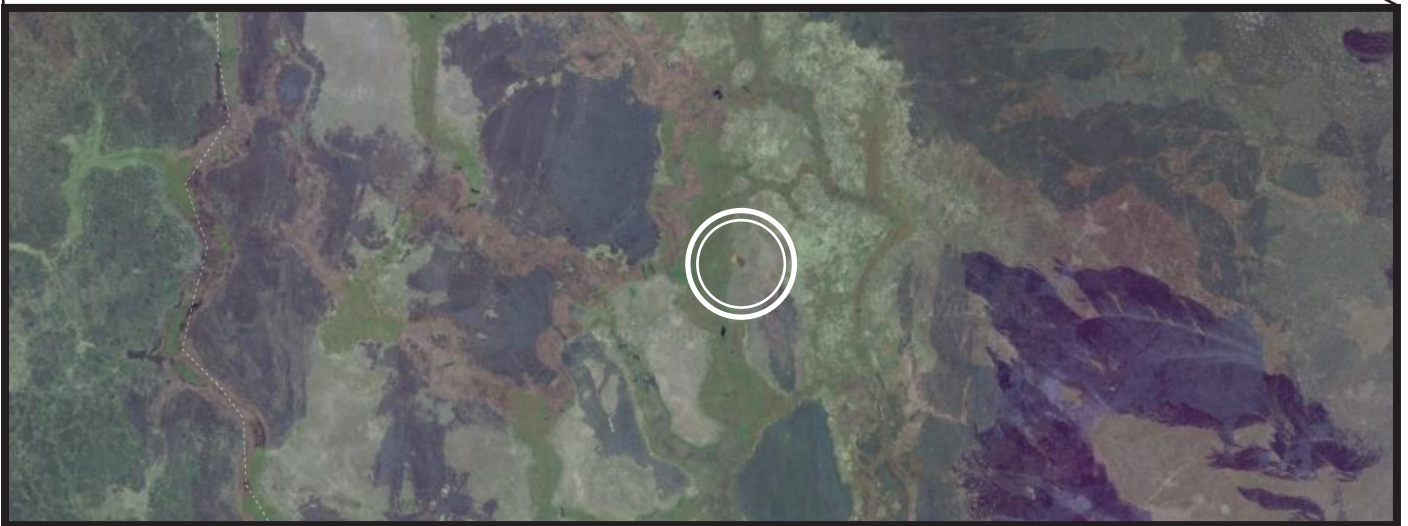
The squad of 30 female footballers, which saw players from over 20 nations, included retired US international Lori Lindsey and former England midfielder Rachel Unitt. The girls not only scaled the tallest free-standing mountain on earth, but they also had to drag up goal posts and nets.

Over the course of a week, the girls made the gruelling 5,895 meters (19,347 feet) climb before descending down to 18,799 feet in the volcano pit for the record setting game. The teams used flour to mark the pitch lines and then used trekking poles as the corner flags. The footballers ranged from 18 to 66 years old and all managed to push through the gruelling conditions on the volcanic ash pitch.

Zoomed out view



Zoomed in view



Only the correct answer will fit in the spaces, once you have this move on to the next clue.

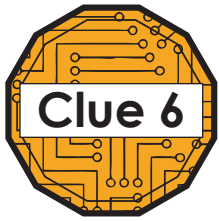
Did you know? (DO NOT READ BEFORE ANSWERING THE CLUE)

They Never Forget

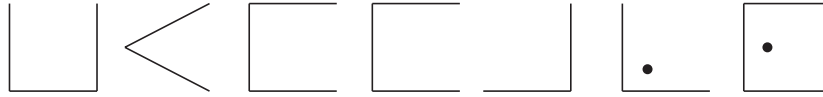
During the era of hunting for the 'big five' this animal killed more hunters in Africa than any other animal. When wounded, they become aggressive and angry. They would seek revenge on the hunter and even remember the encounter the following day (or following years according to some tales). If wounded they would circle around their enemy and counter-attack, instead of fleeing.

They Have Friends

The birds you see sitting on the hide of these animals are called oxpeckers. They have a symbiotic relationship and remove ticks/insects embedded in their skin.



1. This animals name is coded below with each letter being represented by a symbol of lines and dots. Starting on the left the word is displayed in code in the correct order.

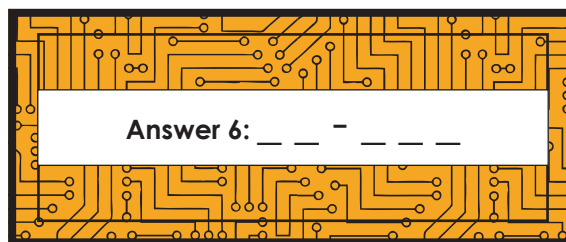
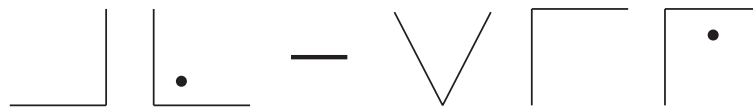


- 2.
- This word has been coded using a cipher.
 - A cipher is used to encrypt words using a specific pattern.
 - Below is the cipher used to encrypt the coded animal name in step 1.
 - However some information has been left out of the cipher.
 - You must figure what has been left out, add it to the cipher and move on to step 3.
- Tip - if you are struggling, to help you work this out we suggest:*
- Firstly write out the coded word from step 1 with the correct letters underneath each symbol (each symbol represents one letter and the word is written in order).
 - Secondly draw the cipher below on a piece of paper and add the symbols of the letters you know to it.
 - Finally look for the patterns to work out what the remaining letters symbols should be and draw them on.

A	B	C	J	K	L
D	E	F	M	N	O
G	H	I	P	Q	R

	S		W
T	U	X	Y
V		Z	

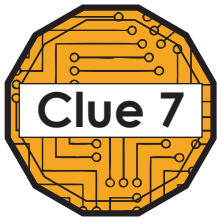
3. Using the completed cipher work out this coded location in the world. Write the answer in the answer section - please note the horizontal line in the middle is a hyphen and not part of the code.



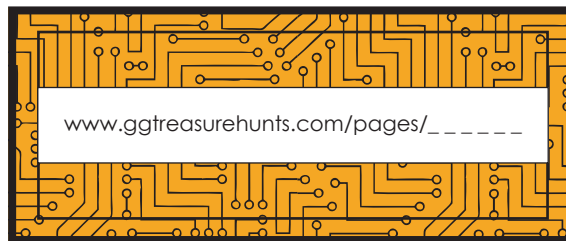
Only the correct answer will fit in the spaces, once you have this move on to the next clue.

Did you know? (DO NOT READ BEFORE ANSWERING THE CLUE)

The origins of this cipher. Called Pigpen it is believed to be an ancient cipher and is said to have originated with the Hebrew rabbis. There is evidence that suggests that the Knights Templar utilised a pig-pen cipher during the Christian Crusades. More recently George Washington's army had documentation about the system, with a much more randomised form of the alphabet. And during the American Civil War, the system was used by Union prisoners in Confederate prisons.

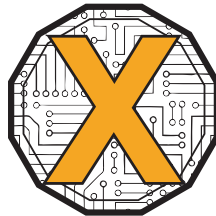


1. Type this location in the search bar and go here.
2.
 - Click onto street view mode (the little man icon by the world map bottom right corner).
 - Drag and drop the man onto this location so you enter street view.
 - Start walking in street view on the path in a westward direction (to do this quickly double click ahead on the path as far as you can see rather than using the arrows).
3.
 - Keep going to the end of the path and until you emerge into a large open area.
 - How many pillars can you count on the building in front of you? (Count only the pillars on the front of the building).
 - Add this to the website address below and go to this web page.



Only the correct answer will fit in the spaces, once you have this try and access it on the internet.

Write down the first letters of the answers from clues 1 - 6 and use this as the password to access the treasure page, it must be entered in capitals.



Did you know? (DO NOT READ BEFORE ANSWERING THE CLUE)

The story of how this place was rediscovered...

Over 2000 years ago, the city of Petra was founded as the capital of the Nabataean kingdom. For centuries it represented the hidden homeland of an extinct civilisation in the Western imagination. That was until the ruins were rediscovered in 1812 by Swiss explorer Johann Burckhardt.

In 1806 Burckhardt moved to England in 1806, where he was introduced to Sir Joseph Banks of the Royal Society. Fascinated by exploration and 'Darkest Africa', Banks elected to sponsor the young Swiss in a mission to discover the source of the River Niger. In preparation for his expedition, Burckhardt studied Arabic at Cambridge, before continuing his education at Aleppo in Syria. It was on his journey to Aleppo that Burckhardt was first inspired by tales of the lost city of Petra.

After two years in Syria mastering Arabic and studying the Qur'an, Burckhardt assumed the alias of Sheikh Ibrahim Ibn Abdallah in an attempt to disguise himself as a native of the region. He wrote in his journal: 'I thought it advisable to equip myself in the simplest manner. I assumed the most common Bedouin dress [and] took no baggage with me'.

Inspired by stories of the lost city, Burckhardt travelled south from Nazareth where local tribespeople told him of ruins in a narrow mountain valley near the supposed tomb of Aaron, the brother of Moses. Claiming that he wished to sacrifice a goat to Aaron, Burckhardt convinced a local guide to take him to the ruins. In his journal Burckhardt describes the eighty-foot-high precipices and the great torrent that lead the way to Petra, and his amazement at finally setting his eyes upon the towering mausoleum 'cut entirely out of the rock'.

The explorer died of dysentery in 1817 aged just 33. Though he failed in his original aim of locating the source of the Niger, he did succeed in rediscovering the ancient city of Petra. Quite amazingly, he did so in the guise of a Syrian pauper, never having his true identity discovered.



Clue 1

- 1. This country is in the southern tip of South America

Clue 2

- 1. The town beginning with C is Charlone.
- 2. The actress is Camero Diaz.
- 3. You are looking for a picture of a musical instrument.

Clue 3

- 1. The _ _ _ _ _ S
- 2. The African animal is a zebra.
- 3. White wall.

Clue 4

- 1. Dunstable

Clue 5

- 1. The second largest continent.
- 2. The mountain is in Tanzania and Kenya.
- 3. This is in the Geita region.
- 4. it is a herd of animals.

Clue 6

- 1. Each symbol represents a letter.
- 2. Lines need to be added to the cipher in-between the 6 letters top left and the 4 letters bottom left. Lines and dots need to be added in-between the 6 letters on the top right and 4 letters bottom right.
- 3. The last letter is Q.

Clue 7

- 1. The location is in the middle east.
- 2. Walk to the left.
- 3. You will emerge into area with an old building carved into rock.



Clue 1 - Argentina

- 1. Argentina

Clue 2 - Guitar

- 1. Go to the regional corner by Melo.
- 2. The town is called Ruiz Diaz de Guzman.
- 3. You are looking for a guitar shaped by trees.

Clue 3 - David

- 1. The Beatles.
- 2. Abbey Road Crossing.
- 3. Graffiti on the white wall to the north west of the crossing.

Clue 4 - Lion

- 1. Lion on hill near Whipsnade Zoo.

A	B	C
D	E	F
G	H	I

J	K	L
M	N	O
P	Q	R

Clue 5 - Buffalo

- 1. Africa.
- 2. Lake Victoria.
- 3. Type in the search bar 'Buffalo herd in Tanzania'.
- 4. Buffalo herd.

Clue 6 - Al - Siq

- 1. Each symbol represents a letter starting with B on the left.
- 2. See correct cipher on the right.
- 3. Al - Siq.



Clue 7

- 1. Al-siq close to Petra ruins in Jordan.
- 2. Walk to the left towards the treasury and ruins of Petra.

PRINTER FRIENDLY x

These versions use less colour, please print them if you wish to use less ink.

Welcome to The Great Game Digital Treasure Hunt...

This treasure hunt will lead you around the digital world to some amazing wonders and interesting sights.

Each clue will link with the next and lead you to discover somewhere completely new until finally you will reveal instructions on how to access the treasure. The treasure is a hidden web-page.

Requirements

- Access to the internet.
- Access to Google Earth. **IMPORTANT NOTE** - you must use Google Earth and *not* Google Maps, this can be downloaded as an app or launched from an internet browser.

Instructions

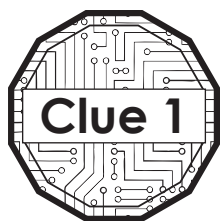
1. Enter into Google Earth.
2. Write the answers in as you go - only the correct answer will fit in the spaces provided.
3. Use of the internet to help you is permitted.
4. Hints can be found on the last page at the top - use this for a nudge in the right direction.
5. Answers are on the last page at the bottom.

Remember if you are stuck try re-reading the question carefully before checking the hints & answers.

Contents

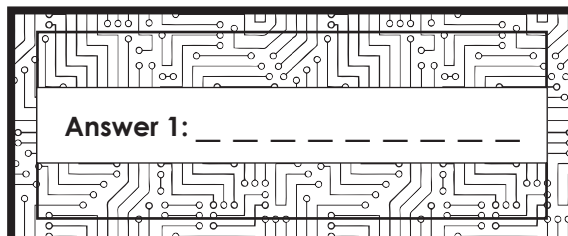
Clue 1.....	2	Clue 5.....	7
Clue 2.....	3	Clue 6.....	8
Clue 3.....	4	Clue 7.....	9
Clue 4.....	5	Hints & Answers.....	10
Clue 5.....	6	Printer Friendly Version	

...Good luck!



1. Find the country that fits the following criteria (Tip - read each criteria carefully).

- It is on the continent that sits between the worlds 2 largest oceans.
- It is close to the only pole with a land mass.
- It has a long land border on its western side.
- It has a sea border on this eastern side.
- It has a mountain range running down its western border.
- It shares land borders with 5 other countries.



Only the correct answer will fit in the spaces, once you have this move on to the next clue.

Did you know? (DO NOT READ BEFORE ANSWERING THE CLUE)

This was the first country to use fingerprints for identification

In 1892, the small town of Necochea, was rocked by the gruesome stabbing of two children. With no witnesses to the crime, local police were unable to tie the murder to any particular suspect. Utilizing a bloody fingerprint left on a door handle, a local detective discovered the murderer to be the kids' mother (who not long after, eventually confessed to the crime.)



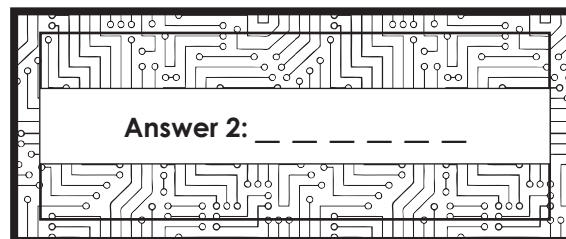
1.
 - Locate this country's capital.
 - Zoom in so you are 100 km from the earth's surface. You can see your distance in the bottom right corner as shown in the box here:



- From here move west until you reach the **first** regional line (thin dotted white line) running south to north past a town beginning with C.
- *If you need to re-align the map to north then just click once on the compass and it will re-adjust.*
- The same line turns eastwards at a right angle close to a town beginning with M.

2.
 - From this right angle continue scrolling northwards until you reach a town whose name includes the same surname of a famous American actress (if you reach the next motorway you've gone too far).
Hint - this actress won a Golden Globe for starring in 'There's Something About Mary'.

3.
 - Zoom in to 10 km (10,000m).
 - Scan directly westwards until you spot a large object depicted in the natural environment (if you reach the town of Washington you've gone too far).
 - Write this in the answer.



Only the correct answer will fit in the spaces, once you have this move on to the next clue.

Did you know? (DO NOT READ BEFORE ANSWERING THE CLUE)

Why this is here..

A farmer created this as a stunning tribute to his late wife by planting 7,000 trees. His wife first suggested the idea after flying over land and noticing that a farm looked a bit like a milking pail. However the farmer was too busy at the time with work to take her plans seriously but after she died in 1977 while carrying their fifth child he and their four children planted every tree individually starting in 1979, it is known as the Nazca Guitar.

Somebody Once Played for Four-and-a-Half-Days

In 2011, Irish guitarist Dave Browne set a new world record for the longest guitar session ever. The talented guitarist played non-stop for 114 hours, 6 minutes and 30 seconds, between 12 and 17 June.

The mega session took place in the famous Temple Bar Pub in Dublin, Ireland (which remained open for the duration of the gig) and Dave had breaks of no more than 30 seconds between songs. On a guitar lent to him by Stevie Ray Vaughan, Dave played a total of 1,372 songs, finishing with the U2 classic, 'With or Without You'.

The First was Created in Ancient Egypt 3,500 Years Ago

It belonged to a singer of the time known as Har-Mose and was made from polished cedar with a rawhide soundboard, featured three strings, and even had a plectrum device attached to the instrument via a chord. This intriguing guitar heirloom is on display in the Archaeological Museum in Cairo.



1. What word links the object from clue 2 to an insect? Put this word in the space below by **A** (only the correct word will fit in the gaps).

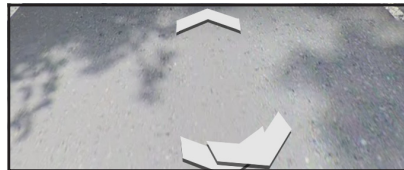
Hint - think about who uses the object in clue 2, music artists, bands etc...

2. Which links word **A** to a religious building, another name for a street and an African animal.

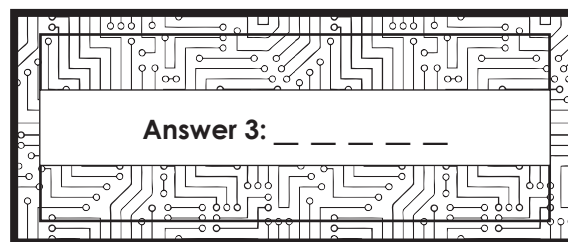
Write the religious building in space by **B** and the street by **C**.

A. _ _ _ _ _ **B.** _ _ _ _ _ **C.** _ _ _ _ _

- 3.
- Type this in the search bar and go here - *it must be typed in exactly as written above to take you to the correct spot* (to access the search bar click on the magnifying glass icon).
 - Click onto street view mode (the little man icon in the bottom right corner).
 - The area will now become highlighted in blue, double click on this to access street view (or drag and drop the man on it if you are on PC).
 - Make sure you are in street view by clicking on the blue highlighted road and not a photo (the small blue circles) - you can check this by making sure there are arrows in the middle of the screen as shown below:



- If you don't see these arrows then you are in a photo and need to exit this mode and try again to get into street view by double clicking on the blue highlighted road or dragging and dropping the man icon on it.
 - Find the answer to the following question and write it in the answer.
 - Who's 50th birthday is it? Use the arrows to help you look around.
- Hint - the writings on the wall.*



Only the correct answer will fit in the spaces, once you have this move on to the next clue.

Did you know? (DO NOT READ BEFORE ANSWERING THE CLUE)

The Title and Cover Happened Because They Were Lazy

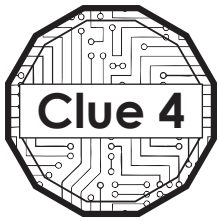
The album's working title was 'Everest,' an inside joke about the brand of cigarettes smoked by engineer Geoff Emerick. They had intended to shoot the cover photo at Mount Everest, but none of them wanted to make the long journey. Instead, McCartney suggested naming it after the street on which EMI Studios was located. That meant they could photograph themselves in the nearest crosswalk, which took about 30 minutes total. They are walking away from the studio which is the white building with the writing on the wall in front.

The Only Cover Without a Name or Title

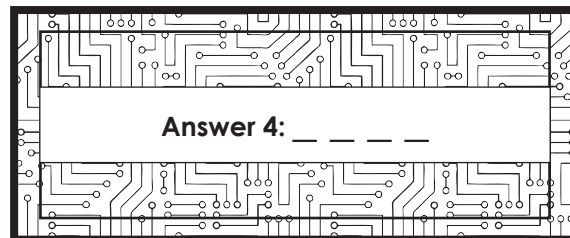
For the only time in their career, The Beatles presented the world with an album cover that didn't feature their name, or the title of the LP at all. Designer John Kosh claimed that EMI bosses were furious, but argued: "The biggest band in the world, you don't have to say who they are - everyone knows who they are."

Only Six Photos Were Taken

Road traffic wasn't the same 50 years ago, but Abbey Road was still a busy thoroughfare, which meant that photographer Iain Macmillan only had a short time to get his shot on his Hasselblad camera. A policeman halted the traffic as Macmillan climbed up a stepladder in the middle of the road. The Fab Four crossed the road back and forth three times as Macmillan fired off a shot each time. Paul McCartney looked at the contact sheet and it was decided that frame five was the best, with all four musicians marching boldly across the road.



1.
 - Zoom out from the location in clue 3.
 - Keep zooming out until you can line up the map below to the view on your screen and stop.
 - Using this view and the map study the area and look for something unusual at the **X**. Write this in the answer.



Only the correct answer will fit in the spaces, once you have this move on to the next clue.

Did you know? (DO NOT READ BEFORE ANSWERING THE CLUE)

This is the Largest Hill Figure in UK.

The giant 147m-long (483ft) landmark was created in 1933 to indicate the location of Whipsnade wildlife park. It is the largest hill figure in England.

WW2 Cover Up

During World War Two it was covered to prevent it from helping German pilots to navigate. Troops were brought in to help camouflage the landmark with brushwood, nets and manure.

It Took 18 Months to Finish

Work began in November 1931. By April 1932, a rough outline was visible, almost two acres of land had to be cleared to reveal the chalk. Thousands of man hours over 18 months were spent digging the creature out of the hillside with pick-axes, it was finished in spring 1933.



1. Go to the continent where this animal can be found.

2. Locate the highest mountain on this continent and scroll north west going past a small lake, then to a second larger lake and stop. *(If you need to re-align the map to north then just click once on the compass and it will re-adjust).*

3.
 - Move to the south western tip of this lake.
 - Continue moving south until you reach the southern tip of this region (indicated by the thin white dotted line).

4.
 - On the next page are 2 images of a specific location from this area.
 - Study this area in detail using the key features in the pictures to help you and figure out where the location is.
 - Following this find the animals which can be seen at the spot inside the white circle by zooming in.
 - Work out what is the name of these animals and write it in the answer.
Tip - you might need to use the internet to correct identify which animal it is.

Did you know? (DO NOT READ BEFORE ANSWERING THE CLUE)

Simba the Lion King

The name for lion in Swahili, an African language, is 'simba'.

Highest Pizza Delivery

In May 2016, Pizza Hut set an official Guinness World Record by delivering the highest altitude pizza to the top of the highest mountain in Africa.

The challenge began on May, 5th 2016 where a pizza was made in Pizza Hut's new Dar Es Salaam restaurant in Tanzania and then flown to Kilimanjaro. From here it was transported to the trailhead and then carried in a insulated, battery-heated pack, which was especially designed to keep the pizza horizontal and fresh.

The record culminated with the General Manager of Pizza Hut Africa Randal Blackford, a group of employees and a team of experienced guides celebrating on the summit of Kilimanjaro with a slice of pepperoni pizza on May, 8th 2016.

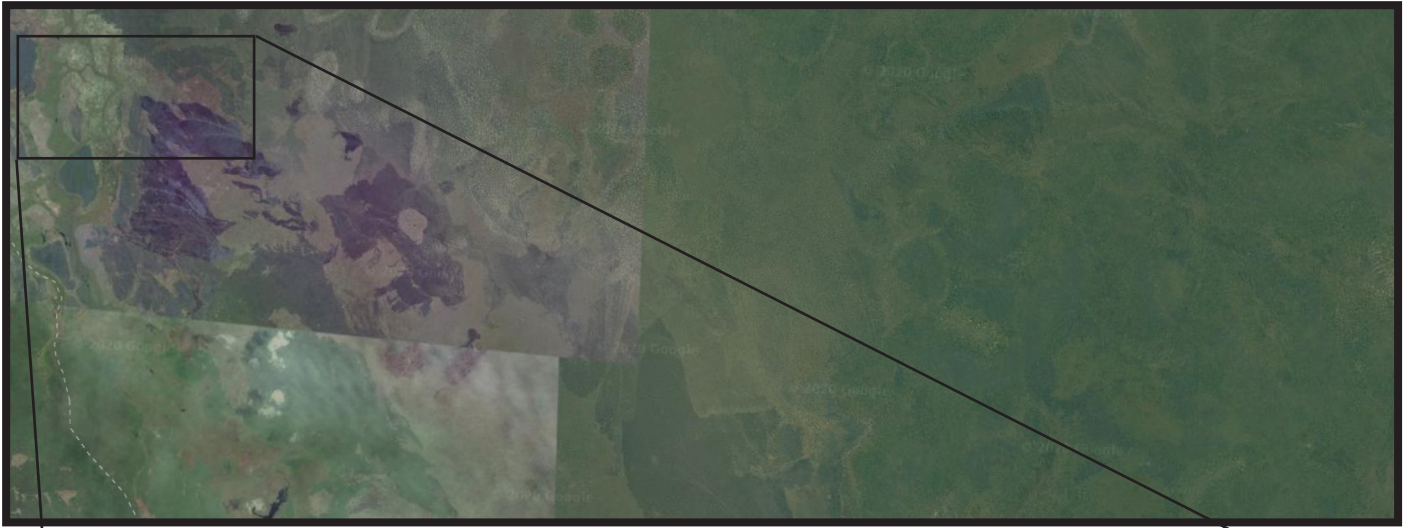
Highest Football Match

In June 2017 a group of 30 female footballers from 20 nations played the highest game of soccer on record. The game was played in Kilimanjaro's volcanic pit and lasted a full 90 minutes.

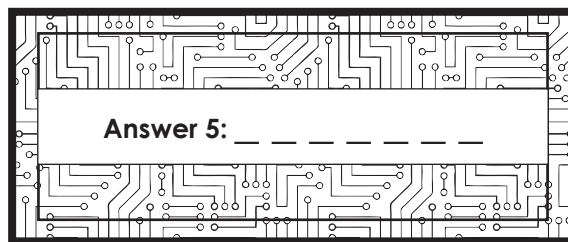
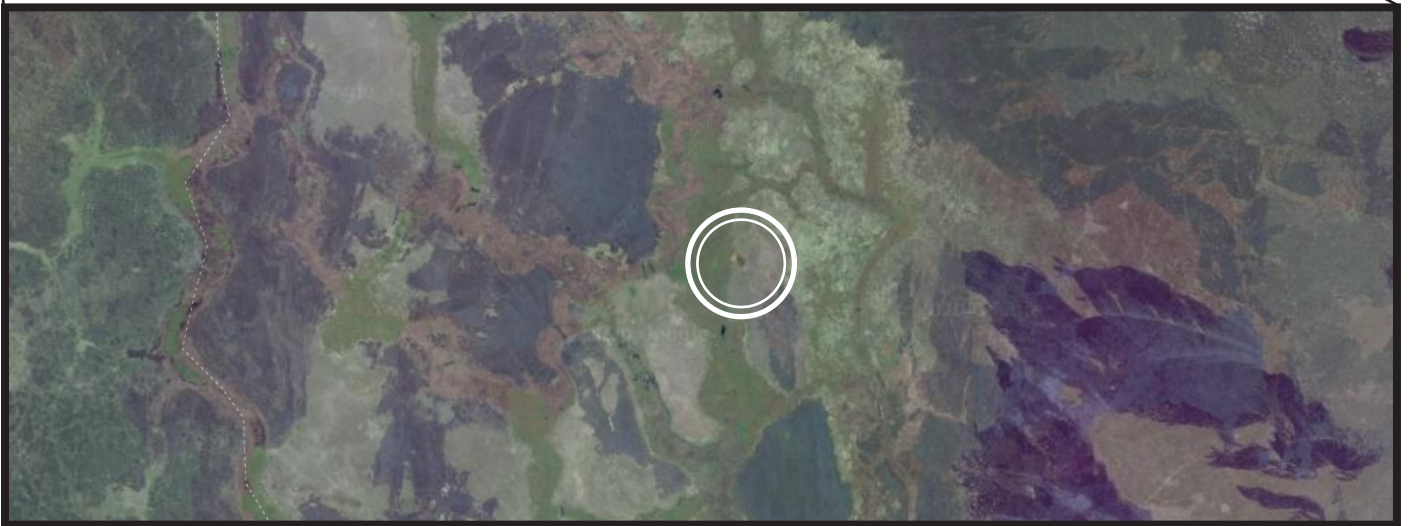
The squad of 30 female footballers, which saw players from over 20 nations, included retired US international Lori Lindsey and former England midfielder Rachel Unitt. The girls not only scaled the tallest free-standing mountain on earth, but they also had to drag up goal posts and nets.

Over the course of a week, the girls made the gruelling 5,895 meters (19,347 feet) climb before descending down to 18,799 feet in the volcano pit for the record setting game. The teams used flour to mark the pitch lines and then used trekking poles as the corner flags. The footballers ranged from 18 to 66 years old and all managed to push through the gruelling conditions on the volcanic ash pitch.

Zoomed out view



Zoomed in view



Only the correct answer will fit in the spaces, once you have this move on to the next clue.

Did you know? (DO NOT READ BEFORE ANSWERING THE CLUE)

They Never Forget

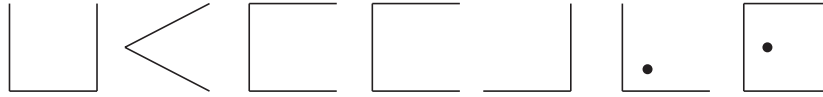
During the era of hunting for the 'big five' this animal killed more hunters in Africa than any other animal. When wounded, they become aggressive and angry. They would seek revenge on the hunter and even remember the encounter the following day (or following years according to some tales). If wounded they would circle around their enemy and counter-attack, instead of fleeing.

They Have Friends

The birds you see sitting on the hide of there animals are called oxpeckers. They have a symbiotic relationship and remove ticks/insects embedded in their skin.



1. This animals name is coded below with each letter being represented by a symbol of lines and dots. Starting on the left the word is displayed in code in the correct order.



- 2.
- This word has been coded using a cipher.
 - A cipher is used to encrypt words using a specific pattern.
 - Below is the cipher used to encrypt the coded animal name in step 1.
 - However some information has been left out of the cipher.
 - You must figure what has been left out, add it to the cipher and move on to step 3.

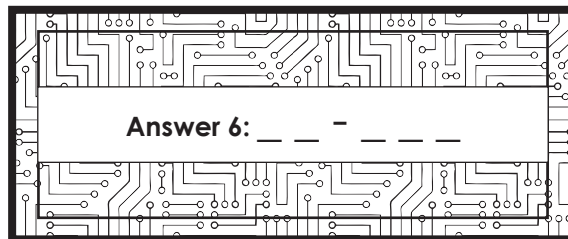
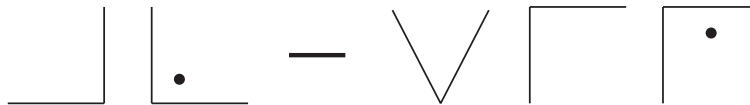
Tip - if you are struggling, to help you work this out we suggest:

- *Firstly write out the coded word from step 1 with the correct letters underneath each symbol (each symbol represents one letter and the word is written in order).*
- *Secondly draw the cipher below on a piece of paper and add the symbols of the letters you know to it.*
- *Finally look for the patterns to work out what the remaining letters symbols should be and draw them on.*

A	B	C	J	K	L
D	E	F	M	N	O
G	H	I	P	Q	R

	S		W
T	U	X	Y
V		Z	

3. Using the completed cipher work out this coded location in the world. Write the answer in the answer section - please note the horizontal line in the middle is a hyphen and not part of the code.



Only the correct answer will fit in the spaces, once you have this move on to the next clue.

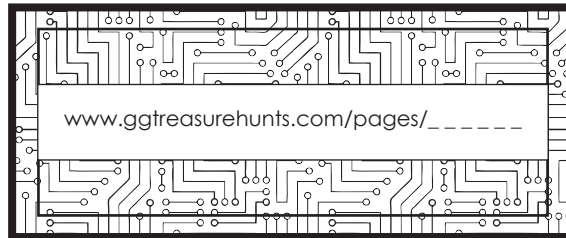
Did you know? (DO NOT READ BEFORE ANSWERING THE CLUE)

The origins of this cipher. Called Pigpen it is believed to be an ancient cipher and is said to have originated with the Hebrew rabbis. There is evidence that suggests that the Knights Templar utilised a pig-pen cipher during the Christian Crusades.

More recently George Washington's army had documentation about the system, with a much more randomised form of the alphabet. And during the American Civil War, the system was used by Union prisoners in Confederate prisons.

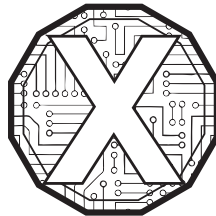


1. Type this location in the search bar and go here.
2.
 - Click onto street view mode (the little man icon by the world map bottom right corner).
 - Drag and drop the man onto this location so you enter street view.
 - Start walking in street view on the path in a westward direction (to do this quickly double click ahead on the path as far as you can see rather than using the arrows).
3.
 - Keep going to the end of the path and until you emerge into a large open area.
 - How many pillars can you count on the building in front of you? (Count only the pillars on the front of the building).
 - Add this to the website address below and go to this web page.



Only the correct answer will fit in the spaces, once you have this try and access it on the internet.

Write down the first letters of the answers from clues 1 - 6 and use this as the password to access the treasure page, it must be entered in capitals.



Did you know? (DO NOT READ BEFORE ANSWERING THE CLUE)

The story of how this place was rediscovered...

Over 2000 years ago, the city of Petra was founded as the capital of the Nabataean kingdom. For centuries it represented the hidden homeland of an extinct civilisation in the Western imagination. That was until the ruins were rediscovered in 1812 by Swiss explorer Johann Burckhardt.

In 1806 Burckhardt moved to England in 1806, where he was introduced to Sir Joseph Banks of the Royal Society. Fascinated by exploration and 'Darkest Africa', Banks elected to sponsor the young Swiss in a mission to discover the source of the River Niger. In preparation for his expedition, Burckhardt studied Arabic at Cambridge, before continuing his education at Aleppo in Syria. It was on his journey to Aleppo that Burckhardt was first inspired by tales of the lost city of Petra.

After two years in Syria mastering Arabic and studying the Qur'an, Burckhardt assumed the alias of Sheikh Ibrahim Ibn Abdallah in an attempt to disguise himself as a native of the region. He wrote in his journal: 'I thought it advisable to equip myself in the simplest manner. I assumed the most common Bedouin dress [and] took no baggage with me'.

Inspired by stories of the lost city, Burckhardt travelled south from Nazareth where local tribespeople told him of ruins in a narrow mountain valley near the supposed tomb of Aaron, the brother of Moses. Claiming that he wished to sacrifice a goat to Aaron, Burckhardt convinced a local guide to take him to the ruins. In his journal Burckhardt describes the eighty-foot-high precipices and the great torrent that lead the way to Petra, and his amazement at finally setting his eyes upon the towering mausoleum 'cut entirely out of the rock'.

The explorer died of dysentery in 1817 aged just 33. Though he failed in his original aim of locating the source of the Niger, he did succeed in rediscovering the ancient city of Petra. Quite amazingly, he did so in the guise of a Syrian pauper, never having his true identity discovered.



Clue 1

1. This country is in the southern tip of South America

Clue 2

1. The town beginning with C is Charlone.
2. The actress is Camero Diaz.
3. You are looking for a picture of a musical instrument.

Clue 3

1. The _ _ _ _ _ S
2. The African animal is a zebra.
3. White wall.

Clue 4

1. Dunstable

Clue 5

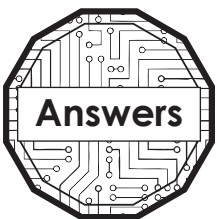
1. The second largest continent.
2. The mountain is in Tanzania and Kenya.
3. This is in the Geita region.
4. it is a herd of animals.

Clue 6

1. Each symbol represents a letter.
2. Lines need to be added to the cipher in-between the 6 letters top left and the 4 letters bottom left. Lines and dots need to be added in-between the 6 letters on the top right and 4 letters bottom right.
3. The last letter is Q.

Clue 7

1. The location is in the middle east.
2. Walk to the left.
3. You will emerge into area with an old building carved into rock.



Clue 1 - Argentina

1. Argentina

Clue 2 - Guitar

1. Go to the regional corner by Melo.
2. The town is called Ruiz Diaz de Guzman.
3. You are looking for a guitar shaped by trees.

Clue 3 - David

1. The Beatles.
2. Abbey Road Crossing.
3. Graffiti on the white wall to the north west of the crossing.

Clue 4 - Lion

1. Lion on hill near Whipsnade Zoo.

Clue 5 - Buffalo

1. Africa.
2. Lake Victoria.
3. Type in the search bar 'Buffalo herd in Tanzania'.
4. Buffalo herd.

A	B	C
D	E	F
G	H	I

J	K	L
M	N	O
P	Q	R

Clue 6 - Al - Siq

1. Each symbol represents a letter starting with B on the left.
2. See correct cipher on the right.
3. Al - Siq.



Clue 7

1. Al-siq close to Petra ruins in Jordan.
2. Walk to the left towards the treasury and ruins of Petra.